



# LET'S TALK ABOUT SAFEGUARDING

(VISITORS VERSION)

Read BSG  
Safeguarding Policies:

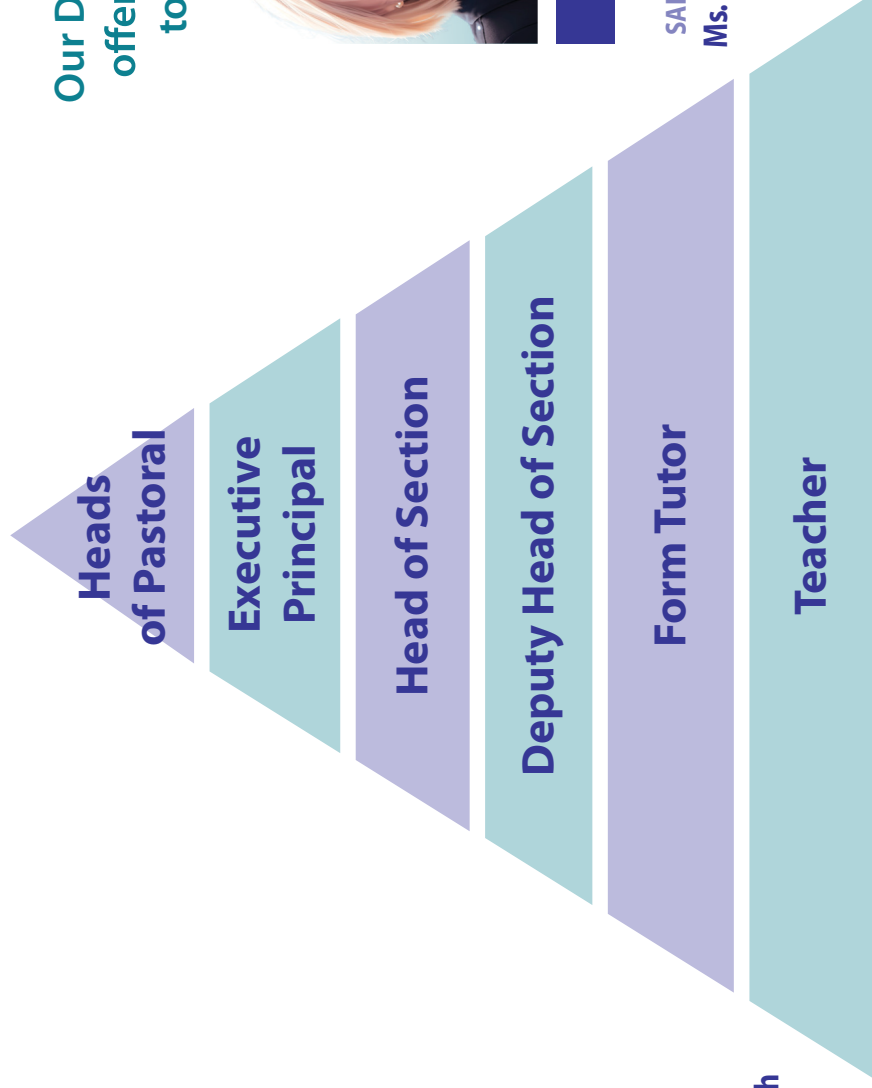
[www.britishschoolgeneva.ch/downloads](http://www.britishschoolgeneva.ch/downloads)



# Our Safeguarding Team

Safeguarding: is EVERYTHING we do in school to keep children safe, healthy, happy and therefore learning.

If you need someone to talk to, we are here for you!



**Executive  
Principal**

DEPUTY  
SAFEGUARDING LEAD

**Mr. George Phillip Walsh**



**Heads of Pastoral**

DESIGNATED  
SAFEGUARDING LEAD

**Ms. Aisling Demaison**



**Heads of Pastoral**

DESIGNATED  
SAFEGUARDING LEAD

**Ms. Coreen Croskery**

Our Designated Safeguarding Leads offer a safe and confidential space to connect and share concerns.

CONTACT: [pastoralcare@britishschoolgeneva.ch](mailto:pastoralcare@britishschoolgeneva.ch)

# Our Safeguarding Leadership Team



EXECUTIVE PRINCIPAL  
DEPUTY SAFEGUARDING LEAD

**Mr. George Phillip Walsh**



DEPUTY EXECUTIVE  
PRINCIPAL

**Mr. Arron Steel**



HEAD  
OF ADMISSIONS

**Ms. Michela Mantani**



HEAD  
OF PRIMARY & EYFS

**Ms. Dara Evans**



HEAD  
OF SECONDARY

**Ms. Alice Parker**



HEAD  
OF SIXTH FORM

**Ms Sophie  
Hatfield-Giroux**



HEAD OF PASTORAL  
SAFEGUARDING LEAD

**Ms. Coreen Croskery**



HEAD OF PASTORAL  
SAFEGUARDING LEAD

**Ms. Aisling Demaison**



# What is safeguarding?

**Safeguarding: is EVERYTHING we do in school to keep children safe, healthy, happy and therefore learning.**

**Safeguarding includes but is not limited to:**

- attendance
- administering medicines
- anti-bullying
- behaviour for learning
- code of conduct for staff and volunteers
- clubs, trips, educational visits and extended school activities
- data protection
- drug and substance misuse
- disability objectives and accessibility
- equal opportunities
- emergency planning
- evacuation and lock-down procedures
- first aid
- intimate care
- on-line safety
- risk assessments
- safe recruitment practices
- managing allegations against staff and volunteers
- school and site security
- safeguarding advice for visitors
- special educational needs and disabilities
- taking and using photographs
- whistle-blowing
- CHILD PROTECTION

# Safeguarding rules for visitors

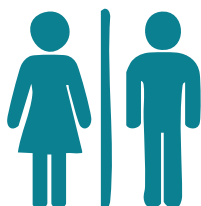
**Welcome to BSG. We kindly ask that all visitors to BSG respect these rules to ensure the safety of our school**



- All visitors must sign in at reception and wear a visitor badge while on school premises



- Photos and videos are not permitted



- No use of student restrooms



- Visitors must be accompanied by a staff member around the school building